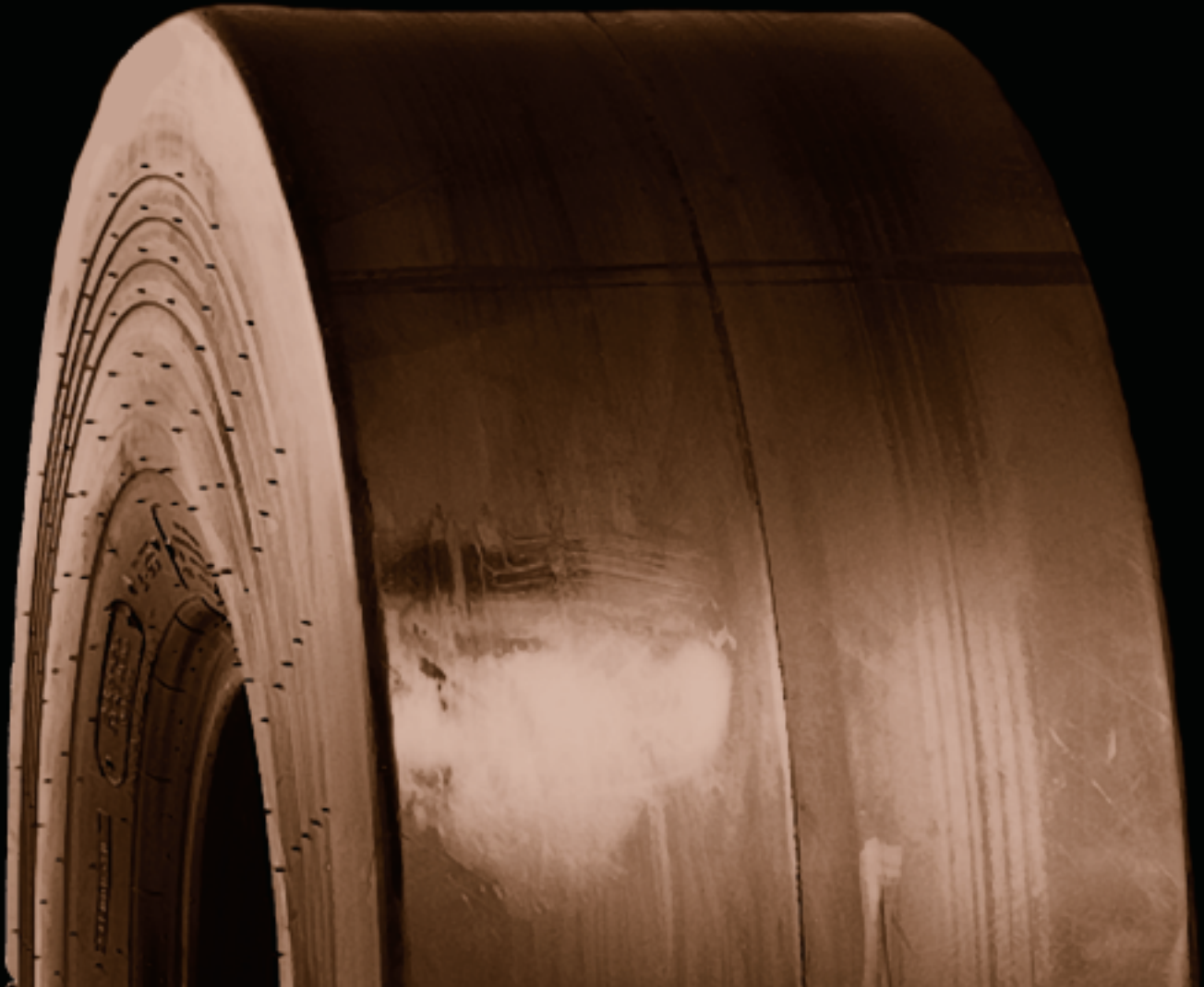


**BRIDGESTONE**



**STMS**  
**(L5S INDUSTRIAL)**  
SMOOTH TREAD-MS



OFF-THE-ROAD TIRES

# STMS (L5S INDUSTRIAL) SMOOTH TREAD-MS



The SMOOTH TREAD-MS bias tire is specially designed for reach stackers, top picks, straddle carriers, and other container handling equipment.

- ✓ *Extra deep tread for maximum life and exceptional cut resistance*
- ✓ *Designed for container handler applications*
- ✓ *Special compounds to resist heat and cutting*

CATEGORY	TIRE SIZE	ARTICLE	PLY RATING	COMPOUND	TRA	AVERAGE WEIGHT	OTD (32ND)	RIM/ FLANGE	OVERALL DIAMETER (IN)	OVERALL WIDTH (IN)	STATIC LOAD RADIUS	STATIC LOADED WIDTH	MIN DUAL SPACING	REVS PER MILE
Small Tubeless	18.00-25	422231	40	IDU	L5S	1,150	106	13.00/2.5	65.9	20.5	30.0	21.7	23.1	315
Large Tubeless	26.5-25	424617	36	IDU	L5S	1,940	120	22.00/3.0	70.8	26.8	32.6	28.3		293

Equipment icons shown on this bulletin denote general categories, not specific tire applications.