

# MICHELIN XGLA2

An L2/G2 tyre for medium power graders  
(up to 200 kW)

**Traction**

**Adhesion**

**Operating costs**



# MICHELIN XGLA2

## An L2/G2 tyre for medium power graders (up to 200 kW)

SIZES	TREAD DEPTH	
	mm	32 <sup>nd</sup> inch
14.00 R 24 TL *	25	31,5
16.00 R 24 TL *	27	34

### ➤ TRACTION

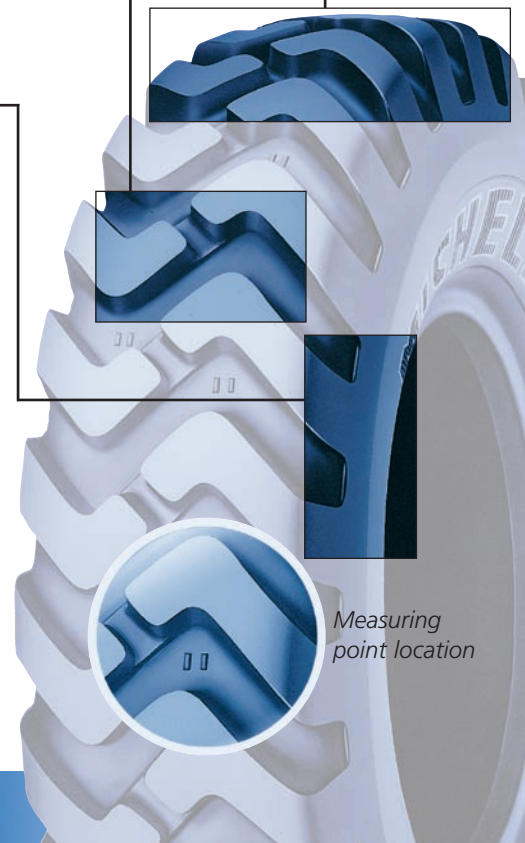
■ An aggressive tread pattern, formed from many non directional blocks, provides a high tractive capability on unstable and on muddy soils.

### ➤ ADHESION

■ With an aggressive pattern and high void to block ratio, an excellent adhesion is assured

### ➤ OPERATING COSTS

■ A specific sidewall design protects against damage and abrasion reducing the number of machine immobilisations



855 200 507 RCS Clermont-Ferrand  
Edition 6688 Gb (2011-01) - Ref. 0508154  
fusium 121338 - Tél. 04 73 73 25 25

REPAIRABILITY AND RETREADABILITY MAXIMIZED THANKS TO THE EXTREME RELIABILITY OF THE CASING (##)

(##) provided that the worn tyre answers criteria of retreading and/or repair.

#### BENEFITS OF THE MICHELIN® RADIAL TECHNIQUE

- longer tyre life
- better traction on all types of surface
- lower fuel consumption
- improved comfort
- increased resistance to punctures / flats
- increased heat resistance