

# **MICHELIN X STACKER 2 STACKS UP IN PERFORMANCE**



**MAXIMIZE THE UPTIME  
OF YOUR REACH  
STACKER**



*A better way forward*



# MICHELIN X STACKER 2 18.00 R 25

# STACKS UP IN PERFORMANCE



**RUN FASTER<sup>(1)</sup> AND...**

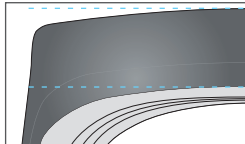


**...LAST LONGER<sup>(2)</sup>!**

■ ADAPTED TREAD DEPTH TO RUN FASTER

MICHELIN X STACKER 18.00 R 25

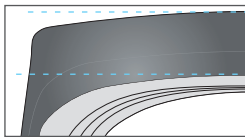
**5KM**  
DISTANCE/HOUR



90mm

MICHELIN X STACKER 2 18.00 R 25

**7KM**  
DISTANCE/HOUR



72mm

MICHELIN X STACKER 2 18.00 R 25 is an IND-5 tire: tread code for extra deep pattern.

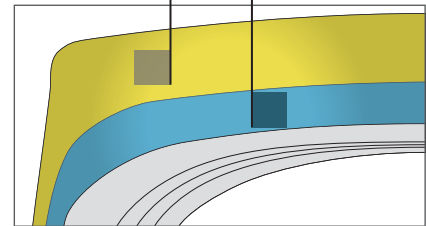
**+40%<sup>(1)</sup>**  
OF DISTANCE  
PER HOUR

■ A DUAL COMPOUND TO RUN FASTER AND FOR LONGER WEAR LIFE

THE MICHELIN DUAL COMPOUND:

Type 1 rubber with high wear-resistance

Type 2 rubber with high heat-resistance



**7%<sup>(2)</sup>**  
LONGER  
WEAR LIFE

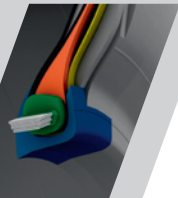
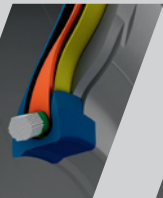


## MORE ROBUST<sup>(1)</sup>

■ IMPROVED OVERALL ROBUSTNESS OF THE TIRE

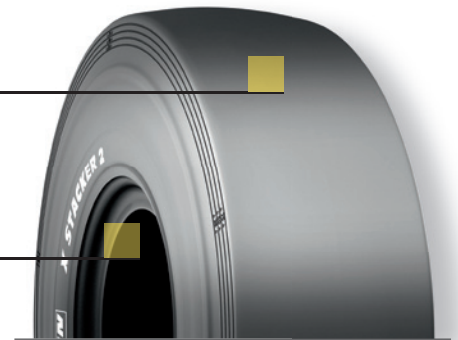
STANDARD  
BEAD

MICHELIN BEAD  
WITH B<sup>2</sup>  
TECHNOLOGY



Higher crown endurance<sup>(1)</sup>  
with new improved structure

Excellent bead endurance  
with the introduction  
of B<sup>2</sup> Technology



MICHELIN X STACKER 2 18.00 R 25 TL 207 A5 CAI 101475

(1) Compared to MICHELIN X STACKER 18.00 R 25 .

(2) Compared to MICHELIN X STACKER 18.00 R 25, average performance by port site. Projected improvement in wear life based on field performance in customer port sites.



**MICHELIN**

A better way forward

More information: [www.michelinearthmover.com](http://www.michelinearthmover.com)  
Michelin Earthmover Youtube